

2024 KERBSIDE COLLECTION CALENDAR

JANUARY

| M | T | W | T | F | S | S |
|----|----|----|----|----|----|----|
| 1 | 2 | 3 | 4 | 5 | 6 | 7 |
| 8 | 9 | 10 | 11 | 12 | 13 | 14 |
| 15 | 16 | 17 | 18 | 19 | 20 | 21 |
| 22 | 23 | 24 | 25 | 26 | 27 | 28 |
| 29 | 30 | 31 | | | | |

FEBRUARY

| M | T | W | T | F | S | S |
|----|----|----|----|----|----|----|
| | | | 1 | 2 | 3 | 4 |
| 5 | 6 | 7 | 8 | 9 | 10 | 11 |
| 12 | 13 | 14 | 15 | 16 | 17 | 18 |
| 19 | 20 | 21 | 22 | 23 | 24 | 25 |
| 26 | 27 | 28 | 29 | | | |

MARCH

| M | T | W | T | F | S | S |
|----|----|----|----|----|----|----|
| | | | | 1 | 2 | 3 |
| 4 | 5 | 6 | 7 | 8 | 9 | 10 |
| 11 | 12 | 13 | 14 | 15 | 16 | 17 |
| 18 | 19 | 20 | 21 | 22 | 23 | 24 |
| 25 | 26 | 27 | 28 | 29 | 30 | 31 |

APRIL

| M | T | W | T | F | S | S |
|----|----|----|----|----|----|----|
| 1 | 2 | 3 | 4 | 5 | 6 | 7 |
| 8 | 9 | 10 | 11 | 12 | 13 | 14 |
| 15 | 16 | 17 | 18 | 19 | 20 | 21 |
| 22 | 23 | 24 | 25 | 26 | 27 | 28 |
| 29 | 30 | | | | | |

MAY

| M | T | W | T | F | S | S |
|----|----|----|----|----|----|----|
| | | 1 | 2 | 3 | 4 | 5 |
| 6 | 7 | 8 | 9 | 10 | 11 | 12 |
| 13 | 14 | 15 | 16 | 17 | 18 | 19 |
| 20 | 21 | 22 | 23 | 24 | 25 | 26 |
| 27 | 28 | 29 | 30 | 31 | | |

JUNE

| M | T | W | T | F | S | S |
|----|----|----|----|----|----|----|
| | | | | | 1 | 2 |
| 3 | 4 | 5 | 6 | 7 | 8 | 9 |
| 10 | 11 | 12 | 13 | 14 | 15 | 16 |
| 17 | 18 | 19 | 20 | 21 | 22 | 23 |
| 24 | 25 | 26 | 27 | 28 | 29 | 30 |

JULY

| M | T | W | T | F | S | S |
|----|----|----|----|----|----|----|
| 1 | 2 | 3 | 4 | 5 | 6 | 7 |
| 8 | 9 | 10 | 11 | 12 | 13 | 14 |
| 15 | 16 | 17 | 18 | 19 | 20 | 21 |
| 22 | 23 | 24 | 25 | 26 | 27 | 28 |
| 29 | 30 | 31 | | | | |

AUGUST

| M | T | W | T | F | S | S |
|----|----|----|----|----|----|----|
| | | | | 1 | 2 | 3 |
| 4 | 5 | 6 | 7 | 8 | 9 | 10 |
| 11 | 12 | 13 | 14 | 15 | 16 | 17 |
| 18 | 19 | 20 | 21 | 22 | 23 | 24 |
| 25 | 26 | 27 | 28 | 29 | 30 | 31 |

SEPTEMBER

| M | T | W | T | F | S | S |
|----|----|----|----|----|----|----|
| | | | | | | 1 |
| 2 | 3 | 4 | 5 | 6 | 7 | 8 |
| 9 | 10 | 11 | 12 | 13 | 14 | 15 |
| 16 | 17 | 18 | 19 | 20 | 21 | 22 |
| 23 | 24 | 25 | 26 | 27 | 28 | 29 |
| 30 | | | | | | |

OCTOBER

| M | T | W | T | F | S | S |
|----|----|----|----|----|----|----|
| | 1 | 2 | 3 | 4 | 5 | 6 |
| 7 | 8 | 9 | 10 | 11 | 12 | 13 |
| 14 | 15 | 16 | 17 | 18 | 19 | 20 |
| 21 | 22 | 23 | 24 | 25 | 26 | 27 |
| 28 | 29 | 30 | 31 | | | |

NOVEMBER

| M | T | W | T | F | S | S |
|----|----|----|----|----|----|----|
| | | | | 1 | 2 | 3 |
| 4 | 5 | 6 | 7 | 8 | 9 | 10 |
| 11 | 12 | 13 | 14 | 15 | 16 | 17 |
| 18 | 19 | 20 | 21 | 22 | 23 | 24 |
| 25 | 26 | 27 | 28 | 29 | 30 | |

DECEMBER


| M | T | W | T | F | S | S |
|----|----|----|----|----|----|----|
| | | | | | | 1 |
| 2 | 3 | 4 | 5 | 6 | 7 | 8 |
| 9 | 10 | 11 | 12 | 13 | 14 | 15 |
| 16 | 17 | 18 | 19 | 20 | 21 | 22 |
| 23 | 24 | 25 | 26 | 27 | 28 | 29 |
| 30 | 31 | | | | | |

- Green organics bin (fortnightly)
- Yellow recycling bin (fortnightly)
- Blue waste to landfill bin (weekly)


- Public holiday collection as usual
- No collections on New Year's Day, Good Friday or Christmas Day. All collections will move to the next day for the remaining week.

COLLECTION DAYS

| | |
|-------------|---------------------------|
| MON | Magill and Tranmere |
| TUES | Hectorville and Rostrevor |
| WED | Campbelltown |
| THU | Paradise and Newton |
| FRI | Athelstone |



Bin collection calendars are available on the free My Local Services App





EastWaste

2024 KERBSIDE COLLECTION CALENDAR

FOOD SCRAPS GO IN THE GREEN BIN



Collect food scraps and other organic matter (tissues, hair, and nail clippings!) in your kitchen caddy, then place them in the green organics bin.

Council provides each household with a kitchen organics caddy and an annual supply of compostable bags to line them. Additional bags can be purchased, and broken caddies can be exchanged. Collect from Council office (or call to organise out of hours options).

Place compostable material in your green bin (never in a plastic bag!) Don't have a green bin? Request one on Council's website.

MISSED BINS, REPAIRS & BIN ENQUIRIES

Call East Waste 8347 5111 or visit eastwaste.com.au

FREE TV, COMPUTER, BATTERY AND HOUSEHOLD CHEMICAL WASTE DROP OFF

These must not be placed in any household bin. Take these items to Campbelltown Works Depot, 6 Newton Road, Campbelltown. Open Mon - Fri, 8am to 3pm. For more info visit campbelltown.sa.gov.au

DON'T KNOW WHICH BIN? HEAD TO THE WHICH BIN WEBSITE



OTHER WASTE ENQUIRIES

Council 8366 9222
Council office: 172 Montacute Rd, Rostrevor

MORE WASTE & RECYCLING INFO

Council's website is a great source of information regarding recycling and waste collection services for residents to help them dispose of hard waste and other unwanted materials. Visit campbelltown.sa.gov.au and search **waste and recycling** for further information about:

- Hard waste and mattress collection
- Food scrap recycling
- Electronic waste and household chemical waste
- Litter and illegal dumping
- Scrap metal
- Clothing and textile recycling
- Pharmaceuticals, polystyrene, printer cartridges and x-rays
- Reducing single use plastic

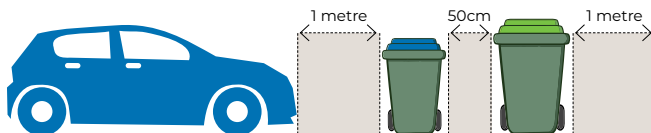
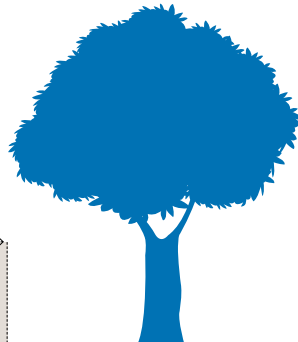
HARD WASTE AND MATTRESS COLLECTION

Book one free 'at call' hard waste and one free 'at call' mattress collection per financial year at eastwaste.com.au or call East Waste 8347 5111.



KERBSIDE BIN PLACEMENT

Where practical, keep a minimum distance of 50cm between bins, and 1 metre between bins and parked cars, street trees, stobie poles and letterboxes. Bins should be kerbside by 6am on collection day. Please remove bins after they have been emptied on the day of collection.



THE GREEN ORGANICS BIN



Food scraps raw and cooked



Teabags and coffee grounds



Meat, bones and seafood



Paper towel and tissues



Compostable bags and cutlery



Lawn clippings and weeds



Prunings, twigs and leaves



NO plastic packaged food



NO clothing, footwear or textiles



NO building materials, dirt or rocks



NO general waste



NO garden tools or hoses

THE YELLOW RECYCLING BIN



Paper and cardboard



Rigid plastic containers



Juice and milk cartons



Tins and cans



Glass bottles and jars



Aluminium foil and trays



Aerosols (empty)



NO polystyrene foam



NO clothing, footwear or textiles



NO building materials, dirt or rocks



NO plastic bags or wrapping



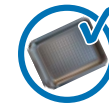
NO broken crockery or glassware

Ensure items are empty, rinsed, dry and left loose - not in a bag!

THE BLUE WASTE TO LANDFILL BIN



Soft plastics



Polystyrene foam



Clothing, footwear or textiles



Single use nappies



Broken crockery and glassware



Ropes and hoses



NO cooking or motor oil



NO liquid paint



NO tyres



NO e-waste or batteries



NO building materials, dirt or rocks



NO chemicals or poisons

DON'T KNOW WHICH BIN?

Head to WHICHBIN.SA.GOV.AU or scan the QR code

