

2025 COLLECTION CALENDAR

JANUARY

M	T	W	T	F	S	S
		1	2	3	4	5
6	7	8	9	10	11	12
13	14	15	16	17	18	19
20	21	22	23	24	25	26
27	28	29	30	31		

FEBRUARY

M	T	W	T	F	S	S
					1	2
3	4	5	6	7	8	9
10	11	12	13	14	15	16
17	18	19	20	21	22	23
24	25	26	27	28		

MARCH

M	T	W	T	F	S	S
					1	2
3	4	5	6	7	8	9
10	11	12	13	14	15	16
17	18	19	20	21	22	23
24	25	26	27	28	29	30
31						

APRIL

M	T	W	T	F	S	S
	1	2	3	4	5	6
7	8	9	10	11	12	13
14	15	16	17	18	19	20
21	22	23	24	25	26	27
28	29	30				

MAY

M	T	W	T	F	S	S
		1	2	3	4	
5	6	7	8	9	10	11
12	13	14	15	16	17	18
19	20	21	22	23	24	25
26	27	28	29	30	31	

JUNE

M	T	W	T	F	S	S
						1
2	3	4	5	6	7	8
9	10	11	12	13	14	15
16	17	18	19	20	21	22
23	24	25	26	27	28	29
30						

JULY

M	T	W	T	F	S	S
	1	2	3	4	5	6
7	8	9	10	11	12	13
14	15	16	17	18	19	20
21	22	23	24	25	26	27
28	29	30	31			

AUGUST

M	T	W	T	F	S	S
				1	2	3
4	5	6	7	8	9	10
11	12	13	14	15	16	17
18	19	20	21	22	23	24
25	26	27	28	29	30	31

SEPTEMBER

M	T	W	T	F	S	S
1	2	3	4	5	6	7
8	9	10	11	12	13	14
15	16	17	18	19	20	21
22	23	24	25	26	27	28
29	30					

OCTOBER

M	T	W	T	F	S	S
		1	2	3	4	5
6	7	8	9	10	11	12
13	14	15	16	17	18	19
20	21	22	23	24	25	26
27	28	29	30	31		

NOVEMBER

M	T	W	T	F	S	S
					1	2
3	4	5	6	7	8	9
10	11	12	13	14	15	16
17	18	19	20	21	22	23
24	25	26	27	28	29	30

DECEMBER


M	T	W	T	F	S	S
1	2	3	4	5	6	7
8	9	10	11	12	13	14
15	16	17	18	19	20	21
22	23	24	25	26	27	28
29	30	31				

- Green organics bin (fortnightly)
- Yellow recycling bin (fortnightly)
- Blue waste to landfill bin (weekly)


COLLECTION DAYS

MON	Magill and Tranmere
TUES	Hectorville and Rostrevor
WED	Campbelltown
THU	Paradise and Newton
FRI	Athelstone

- Public holiday collection as usual
- No collections on New Year's Day, Good Friday or Christmas Day. All collections will move to the next day for the remaining week.



Bin collection calendars are available on the free My Local Services App





EastWaste

2025 KERBSIDE COLLECTION CALENDAR

EASILY COLLECT FOOD WASTE WITH YOUR KITCHEN CADDY



Line the caddy with bags labelled Certified Compostable AS 4736 and/or AS 5810.



OR line your kitchen caddy with newspaper.



After 2-3 days, or when the caddy is full, place collected food waste in your green bin.



TIPS

- A tight-fitting lid on your green bin helps keep flies and pests away.
- Place lawn clippings, leaves or shredded paper on food scraps to reduce odours.
- Freeze scraps like seafood and meat until collection day.

MISSED BINS, REPAIRS & BIN ENQUIRIES

Call East Waste 8347 5111 or visit eastwaste.com.au

OTHER WASTE ENQUIRIES

Council 8366 9222
Council Office
172 Montacute Road, Rostrevor

DON'T KNOW WHICH BIN? HEAD TO THE WHICH BIN WEBSITE



BATTERIES & E-WASTE

Do not place batteries or e-waste in any household bins due to fire risks. Find drop-off locations by clicking on 'Electronic Recycling' at eastwaste.com.au

FREE TV, COMPUTER, BATTERY AND HOUSEHOLD CHEMICAL WASTE DROP OFF

These must not be placed in any household bin. Take these items to Campbelltown Works Depot, 6 Newton Road, Campbelltown. Open Mon - Fri, 8am to 3pm.

For more information visit campbelltown.sa.gov.au

Many items that cannot be placed in your blue, yellow or green kerbside collection bins can still be recycled carefully and sustainably.



Council's website is a great source of information to help residents recycle and dispose of waste and other unwanted materials.

Visit campbelltown.sa.gov.au/waste for further information about:

- Hard waste and mattress collection
- Food waste recycling
- TV, computer and household chemical waste
- Litter and illegal dumping
- Tricky waste

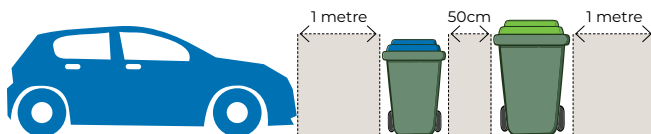
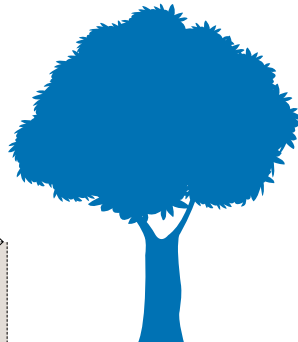
HARD WASTE AND MATTRESS COLLECTION

Book one free 'at call' hard waste and one free 'at call' mattress collection per financial year at eastwaste.com.au or call East Waste 8347 5111.



KERBSIDE BIN PLACEMENT

Where practical, keep a minimum distance of 50cm between bins, and 1 metre between bins and parked cars, street trees, stobie poles and letterboxes. Bins should be kerbside by 6am on collection day. Please remove bins after they have been emptied on the day of collection.



THE GREEN ORGANICS BIN

Never put green organics in plastic bags.



Fruit & vegetables



Bread, pasta & rice



Cooked food



Meat, seafood & bones



Lawn clippings



Leaves, twigs & prunings



Paper towels & tissues



Compostable takeaway packaging



Items labelled compostable AS4736 or AS5810



NO plastic bags or wrapping



NO polystyrene foam



NO plastic packaged food



NO clothing, footwear or textiles



NO plastic pots or containers

THE YELLOW RECYCLING BIN

Items go in empty, rinsed, dry and loose (not in bags).



Paper & cardboard



Hard plastic containers



Hard plastic bottles



Juice & milk cartons



Tins & cans



Glass bottles & jars



Empty aerosols



Clean aluminium



NO clothing, footwear or textiles



NO soft plastic bags or wrapping



NO light globes



NO broken crockery or glassware



NO polystyrene foam



NO food or liquids

THE BLUE LANDFILL BIN

Not all waste can be placed in the blue bin. Please check.



Soft plastics



Polystyrene foam



Clothing, footwear & textiles



Disposable nappies & sanitary items



Broken crockery & glassware



Kitty litter crystals



Ropes & hoses

NEVER IN ANY BIN

Visit campbelltown.sa.gov.au/tricky-waste



NO batteries



NO electronic waste



NO tyres



NO liquid paint



NO building materials, dirt or rocks



NO coolant or motor oil



NO chemicals or poisons