

KERBSIDE COLLECTION CALENDAR 2025-2026 WEEKLY FOGO TRIAL

QUESTIONS?

Για περισσότερες πληροφορίες
Để biết thêm thông tin

☎ 8347 5111

✉ east@eastwaste.com

🌐 eastwaste.com.au/your-council/city-of-prospect/fogotrial/



WEEKLY FOGO TRIAL KERBSIDE COLLECTION CYCLE

GREEN FOGO (Food Organics Garden Organics) bin collected every week.

 **YELLOW RECYCLING** & **GREEN FOGO** bins collected fortnightly on the same day

 **RED WASTE** & **GREEN FOGO** bins collected fortnightly on the same day



PUBLIC HOLIDAY COLLECTIONS

CHRISTMAS WEEK COLLECTION scheduled Thurs, 25 Dec will occur Fri, 26 Dec.

NEW YEARS WEEK COLLECTION scheduled Thurs, 1 Jan will occur Fri, 2 Jan.



JULY 2025

| M | T | W | T | F | S | S |
|----|----|----|----|----|----|----|
| | 1 | 2 | 3 | 4 | 5 | 6 |
| 7 | 8 | 9 | 10 | 11 | 12 | 13 |
| 14 | 15 | 16 | 17 | 18 | 19 | 20 |
| 21 | 22 | 23 | 24 | 25 | 26 | 27 |
| 28 | 29 | 30 | 31 | | | |

AUGUST 2025

| M | T | W | T | F | S | S |
|----|----|----|----|----|----|----|
| | | | | 1 | 2 | 3 |
| 4 | 5 | 6 | 7 | 8 | 9 | 10 |
| 11 | 12 | 13 | 14 | 15 | 16 | 17 |
| 18 | 19 | 20 | 21 | 22 | 23 | 24 |
| 25 | 26 | 27 | 28 | 29 | 30 | 31 |

SEPTEMBER 2025

| M | T | W | T | F | S | S |
|----|----|----|----|----|----|----|
| 1 | 2 | 3 | 4 | 5 | 6 | 7 |
| 8 | 9 | 10 | 11 | 12 | 13 | 14 |
| 15 | 16 | 17 | 18 | 19 | 20 | 21 |
| 22 | 23 | 24 | 25 | 26 | 27 | 28 |
| 29 | 30 | | | | | |

OCTOBER 2025

| M | T | W | T | F | S | S |
|----|----|----|----|----|----|----|
| | | 1 | 2 | 3 | 4 | 5 |
| 6 | 7 | 8 | 9 | 10 | 11 | 12 |
| 13 | 14 | 15 | 16 | 17 | 18 | 19 |
| 20 | 21 | 22 | 23 | 24 | 25 | 26 |
| 27 | 28 | 29 | 30 | 31 | | |

NOVEMBER 2025

| M | T | W | T | F | S | S |
|----|----|----|----|----|----|----|
| | | | | | 1 | 2 |
| 3 | 4 | 5 | 6 | 7 | 8 | 9 |
| 10 | 11 | 12 | 13 | 14 | 15 | 16 |
| 17 | 18 | 19 | 20 | 21 | 22 | 23 |
| 24 | 25 | 26 | 27 | 28 | 29 | 30 |

DECEMBER 2025

| M | T | W | T | F | S | S |
|----|----|----|----|----|----|----|
| 1 | 2 | 3 | 4 | 5 | 6 | 7 |
| 8 | 9 | 10 | 11 | 12 | 13 | 14 |
| 15 | 16 | 17 | 18 | 19 | 20 | 21 |
| 22 | 23 | 24 | 25 | 26 | 27 | 28 |
| 29 | 30 | 31 | | | | |

JANUARY 2026

| M | T | W | T | F | S | S |
|----|----|----|----|----|----|----|
| | | | 1 | 2 | 3 | 4 |
| 5 | 6 | 7 | 8 | 9 | 10 | 11 |
| 12 | 13 | 14 | 15 | 16 | 17 | 18 |
| 19 | 20 | 21 | 22 | 23 | 24 | 25 |
| 26 | 27 | 28 | 29 | 30 | 31 | |

FEBRUARY 2026

| M | T | W | T | F | S | S |
|----|----|----|----|----|----|----|
| | | | | | | 1 |
| 2 | 3 | 4 | 5 | 6 | 7 | 8 |
| 9 | 10 | 11 | 12 | 13 | 14 | 15 |
| 16 | 17 | 18 | 19 | 20 | 21 | 22 |
| 23 | 24 | 25 | 26 | 27 | 28 | |

MARCH 2026

| M | T | W | T | F | S | S |
|----|----|----|----|----|----|----|
| | | | | | | 1 |
| 2 | 3 | 4 | 5 | 6 | 7 | 8 |
| 9 | 10 | 11 | 12 | 13 | 14 | 15 |
| 16 | 17 | 18 | 19 | 20 | 21 | 22 |
| 23 | 24 | 25 | 26 | 27 | 28 | 29 |
| 30 | 31 | | | | | |

APRIL 2026

| M | T | W | T | F | S | S |
|----|----|----|----|----|----|----|
| | | 1 | 2 | 3 | 4 | 5 |
| 6 | 7 | 8 | 9 | 10 | 11 | 12 |
| 13 | 14 | 15 | 16 | 17 | 18 | 19 |
| 20 | 21 | 22 | 23 | 24 | 25 | 26 |
| 27 | 28 | 29 | 30 | | | |

MAY 2026

| M | T | W | T | F | S | S |
|----|----|----|----|----|----|----|
| | | | | 1 | 2 | 3 |
| 4 | 5 | 6 | 7 | 8 | 9 | 10 |
| 11 | 12 | 13 | 14 | 15 | 16 | 17 |
| 18 | 19 | 20 | 21 | 22 | 23 | 24 |
| 25 | 26 | 27 | 28 | 29 | 30 | 31 |

JUNE 2026

| M | T | W | T | F | S | S |
|----|----|----|----|----|----|----|
| 1 | 2 | 3 | 4 | 5 | 6 | 7 |
| 8 | 9 | 10 | 11 | 12 | 13 | 14 |
| 15 | 16 | 17 | 18 | 19 | 20 | 21 |
| 22 | 23 | 24 | 25 | 26 | 27 | 28 |
| 29 | 30 | | | | | |



Collection day reminders
available via the free
My Local Services App



FOOD SCRAPS GO IN THE GREEN FOGO BIN

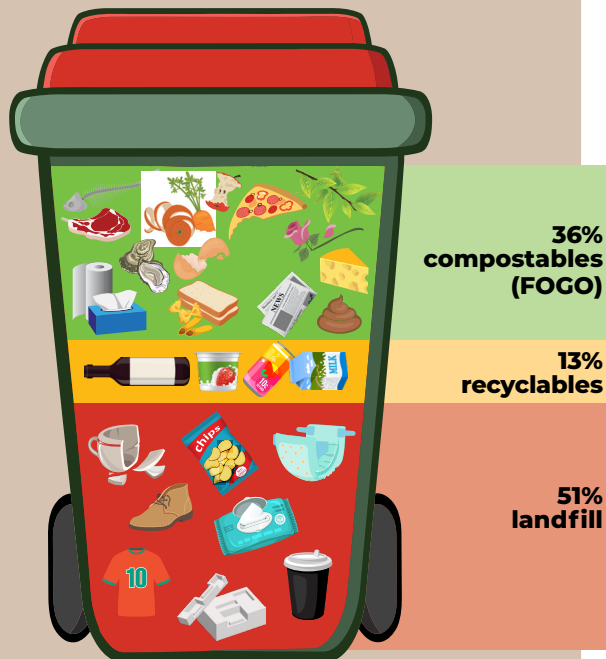
About 36% of red bin waste is FOGO, compostable packaging, and pet waste.

Collect compostable material including food scraps, tissues, hair, and nail clippings in your kitchen caddy, then place them in the green FOGO bin (no plastic bags).

Council provides a kitchen caddy and yearly supply of compostable bags.

WHAT IS IN A TYPICAL RED LANDFILL BIN?

Currently only 51% of the contents of the average red landfill bin should actually be in the red bin. 36% are compostable materials that can go in the green FOGO bin.



Bin audit results from the Weekly Green FOGO Bin trial area, June 2023.

DON'T KNOW WHICH BIN?

Head to WHICHBIN.SA.GOV.AU or scan the QR code



WHICH BIN
SA.GOV.AU



Government of South Australia
Green Industries SA

SHOULD GO IN THE GREEN FOGO BIN

- | | | |
|---------------------------------------|--------------------------------|-----------------------------------|
| | | |
| Food scraps raw and cooked | Tea leaves and coffee grounds | Meat, bones and seafood |
| | | |
| Paper towel and tissues | Compostable bags and food ware | Lawn clippings and weeds |
| | | |
| Prunings, leaves and twigs | NO plastic packaged food | NO clothing, textiles or footwear |
| | | |
| NO dirt, building materials, or rocks | NO general waste | NO garden tools or hoses |



SHOULD GO IN THE YELLOW RECYCLING BIN

Ensure items are empty, rinsed, dry and left loose - not in a bag!

- | | | |
|---------------------------------------|-----------------------------|-----------------------------------|
| | | |
| Paper and cardboard | Rigid plastic containers | Juice and milk cartons |
| | | |
| Tins and cans | Glass bottles and jars | Aluminium foil and trays |
| | | |
| Aerosols (empty) | NO polystyrene foam | NO clothing, textiles or footwear |
| | | |
| NO dirt, building materials, or rocks | NO plastic bags or wrapping | NO broken crockery or glassware |



GOES IN THE RED WASTE TO LANDFILL BIN

Not all waste can be placed in the red bin. If in doubt head to WHICHBIN.COM.AU

- | | | | | | | |
|-------------------------|------------------|--------------------------------|-------------------------|---------------------------------------|-------------------------|-------------------------------|
| | | | | | | |
| Soft plastics | Polystyrene foam | Clothing, textiles or footwear | Single use nappies | Broken crockery and glassware | Ropes and hoses | Wipes |
| | | | | | | |
| NO cooking or motor oil | NO liquid paint | NO tyres | NO e-waste or batteries | NO dirt, building materials, or rocks | NO chemicals or poisons | NO medicines, sharps or xrays |

